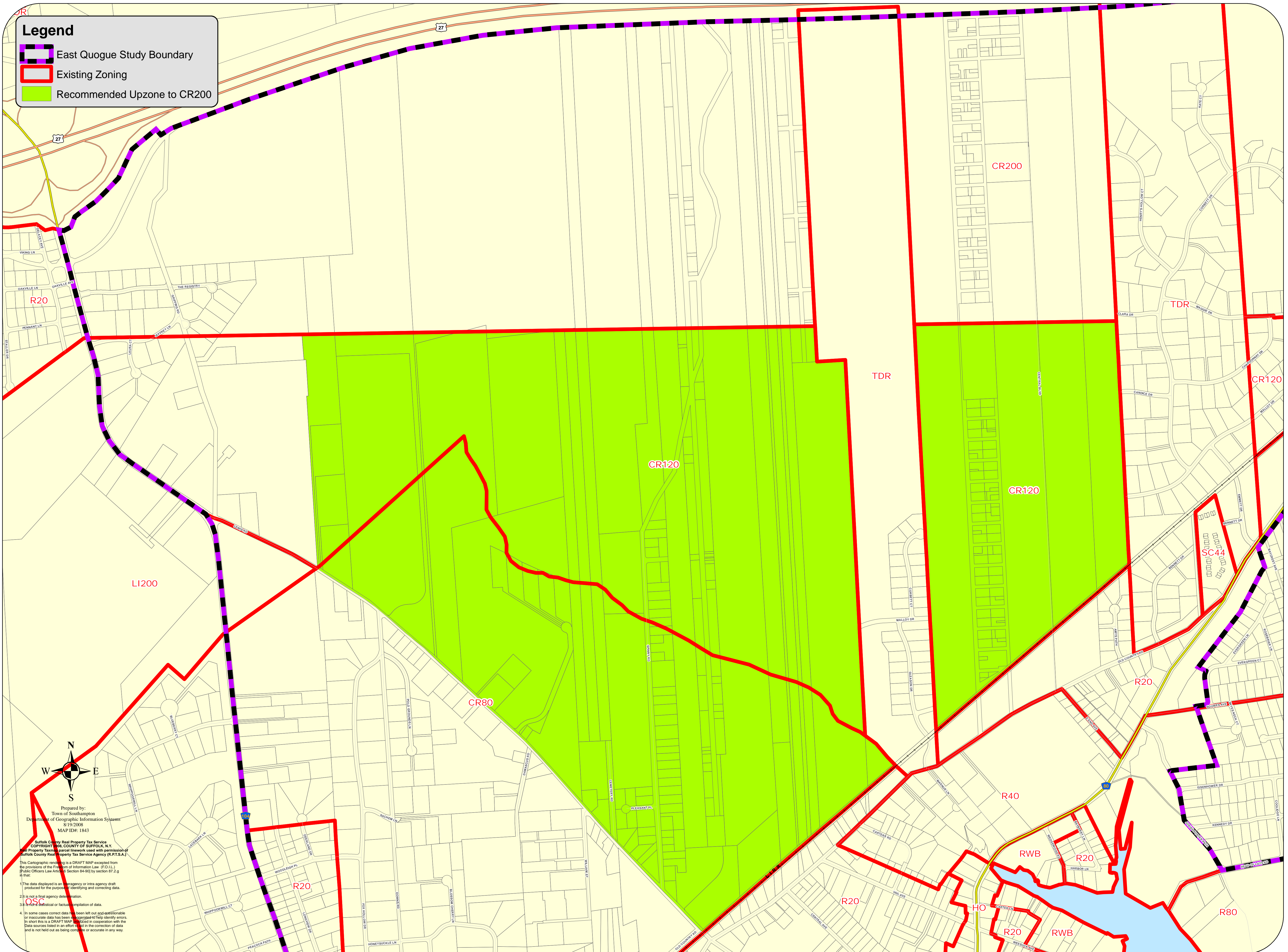


Legend

- East Quogue Study Boundary
- Existing Zoning
- Recommended Upzone to CR200



Prepared by:
 Town of Southampton
 Department of Geographic Information Systems
 8/19/2008
 MAP ID: 1843

Suffolk County Real Property Tax Service
 Copyright © 2008, COUNTY OF SUFFOLK, N.Y.
 Real Property Tax parcel line work used with permission of
 Suffolk County Real Property Tax Service Agency (R.P.T.S.A.)

This Cartographic rendering is a DRAFT MAP exempted from
 the provisions of the Freedom of Information Law (FOIL) by
 Public Officers Law Article 87, Section 84(9) by section 87.2(g)
 of that law.

- The data displayed is an agency or intra-agency draft produced for the purpose of identifying and correcting data.
- This is not a final agency determination.
- OSG is not responsible for factual compilation of data.
- In some cases correct data has been left out and questionable or inaccurate data has been highlighted to help identify errors. In short this is a DRAFT MAP prepared in cooperation with the data sources listed in an effort to aid in the correction of data and is not held out as being complete or accurate in any way.



Town of Southampton

Recommended Upzoning to CR200 - East Quogue

