

PROJECT APPLICANT: TOS Trustees

PROJECT TITLE: Corwin Lane Boat Ramp
Stormwater Management Improvements

PROJECT TYPE: Non-Point Source Abatement and Control

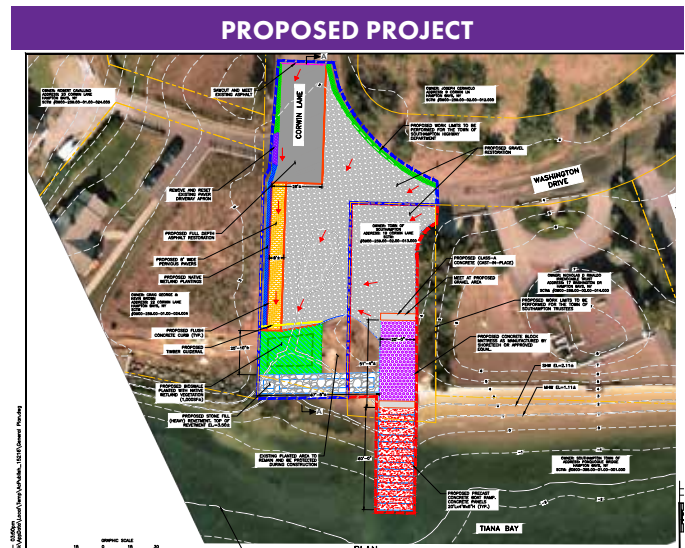
SCALE: Neighborhood/Watershed

APPROACH: Remediation

DESCRIPTION:

The Southampton Town Trustees are looking to replace the boat ramp at the end of Corwin Lane as well as mitigate erosion at the end of the road to ensure safe access for the public and in case of an emergency. The project consists of replacing the existing deteriorating asphalt boat ramp with a precast concrete boat launch, replacing the asphalt/gravel roadway with gravel and a pervious concrete mattress, and stabilizing the shoreline, all to improve stormwater treatment and runoff. To improve infiltration, promote positive flow to green infrastructure and eliminate standing water, approximately 270 square feet of the roads end will be excavated and lined with six (6) inch layer of new gravel. In addition, a 950 square foot pervious concrete mattress will be installed near the boat ramp for stability and infiltration.

Please note that the Trustees are working in conjunction with the Highway Department's Corwin Lane Road Ending Improvements project to maximize stormwater improvements to the area.



REQUESTED AMOUNT: \$152,250.00