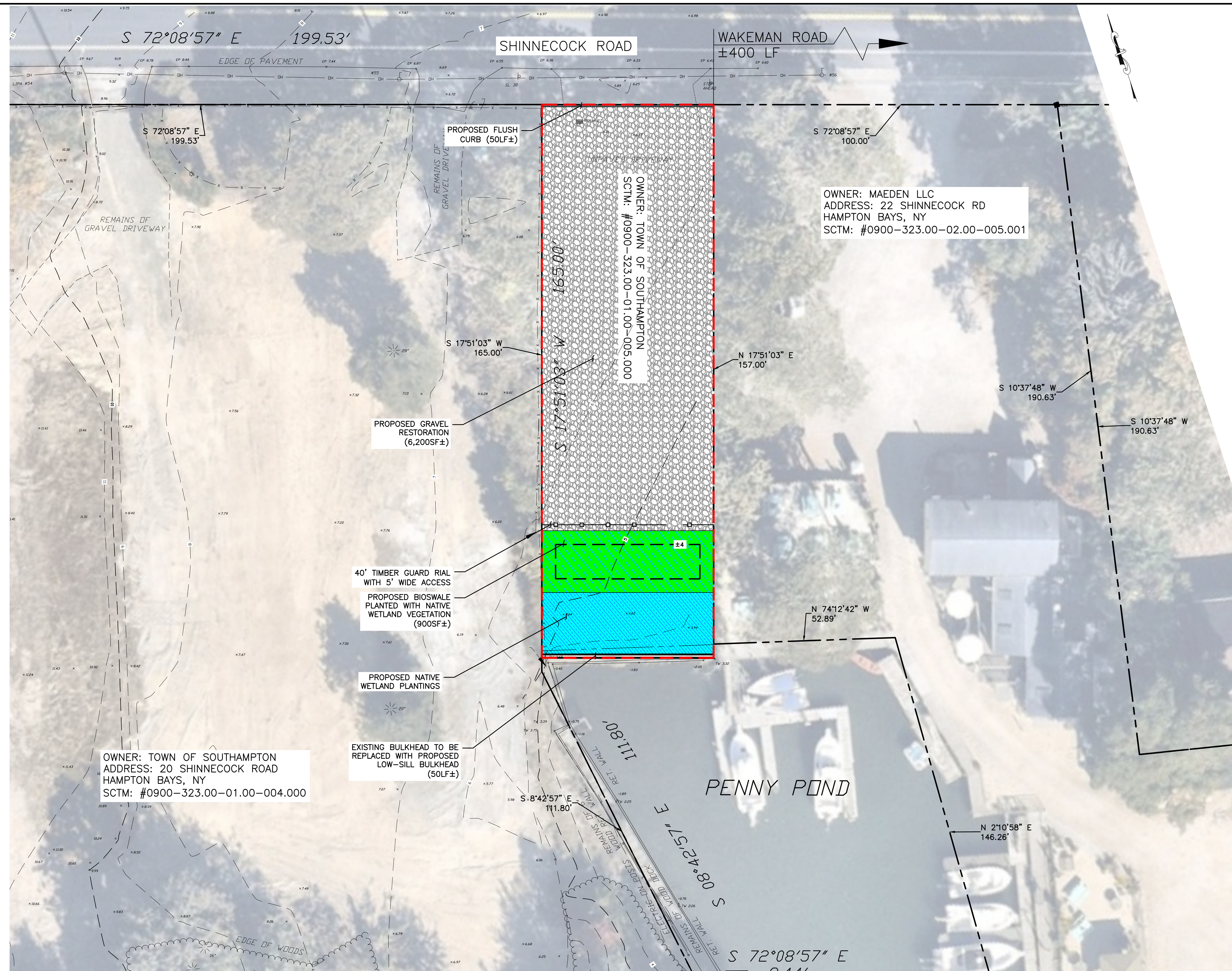


Mar 14, 2025 - 11:50am
 \\EgnyteDrive\Projects\25012.001 TOSH Bel-Aire Cove Park\Trustee Property\Civil.dwg\Contract Drawings\General Plan.dwg

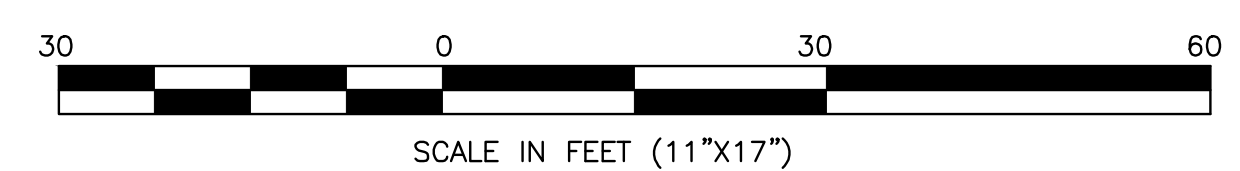
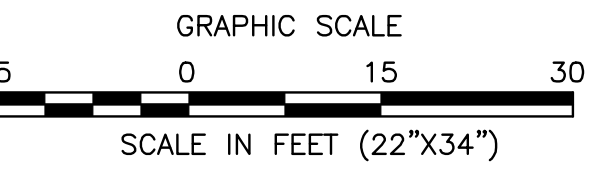


LEGEND

- APPROXIMATE SUFFOLK COUNTY TAX MAP LINES
- PROPOSED WORK LIMITS
- PROPOSED GRAVEL
- PROPOSED BIOSWALE PLANTED WITH NATIVE WETLAND VEGETATION
- PROPOSED NATIVE WETLAND PLANTINGS

NOTES:

1. EXISTING ASPHALT MILLINGS AND IMPERVIOUS SURFACES ON-SITE ARE TO BE REMOVED AND REPLACED WITH GRAVEL RESTORATION AS DEPICTED



PLAN

SCALE 1"=15'

DATUM: NAVD88
 MLW: -1.69
 MHW: 1.11
 SPHW: 2.11

ADJACENT WATER BODY:
 PENNY POND

NOTES:
 1. BEARINGS AS SHOWN ARE IN NEW YORK STATE PLANE COORDINATE SYSTEM NAD 1983, LONG ISLAND ZONE.
 2. ELEVATIONS SHOWN HEREON REFERENCE NAVD 1988.

DATE	BY	DESCRIPTION	APPROV. BY
REVISIONS			
TOWN OF SOUTHAMPTON SUFFOLK COUNTY, NEW YORK TRUSTEE PROPERTY RESTORATION HEAD OF PENNY POND			
GENERAL PLAN			
L. K. McLEAN ASSOCIATES, D.P.C. ENGINEERS & SURVEYORS 437 SOUTH COUNTRY RD., BROOKHAVEN, NY 11719			
Designed By:	KJP/MCJ	Scale: AS SHOWN	Sheet No.
Drawn By:	PHG	Date: MAR. 2025	1 OF 1
Approved By:	MCJ	File No. 25012.001	