

Mar 07, 2025 - 02:16pm C:\Users\RCusack\AppData\Local\Temp\AcPublish\_15216\Existing Conditions Plan.dwg

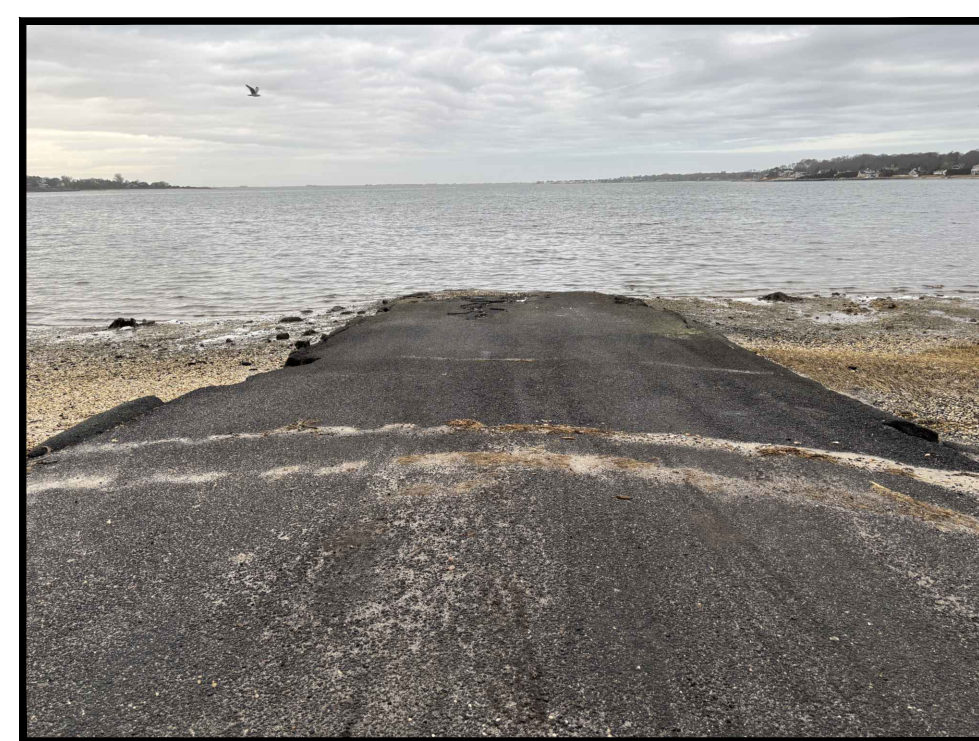
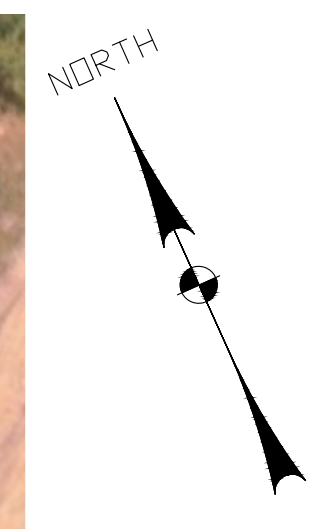
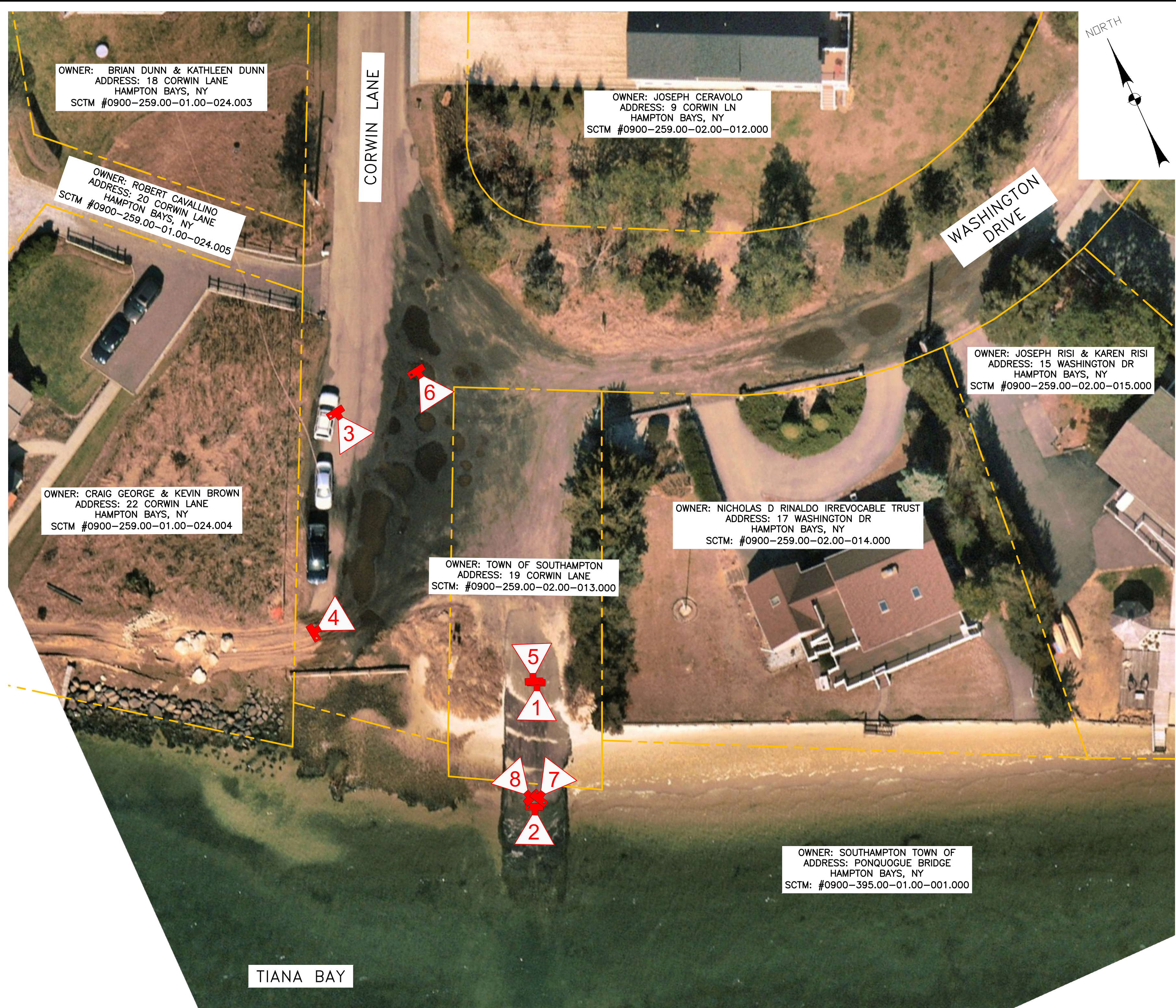


PHOTO NO. 1



PHOTO NO. 2



PHOTO NO. 3



PHOTO NO. 4



PHOTO NO. 5



PHOTO NO. 6

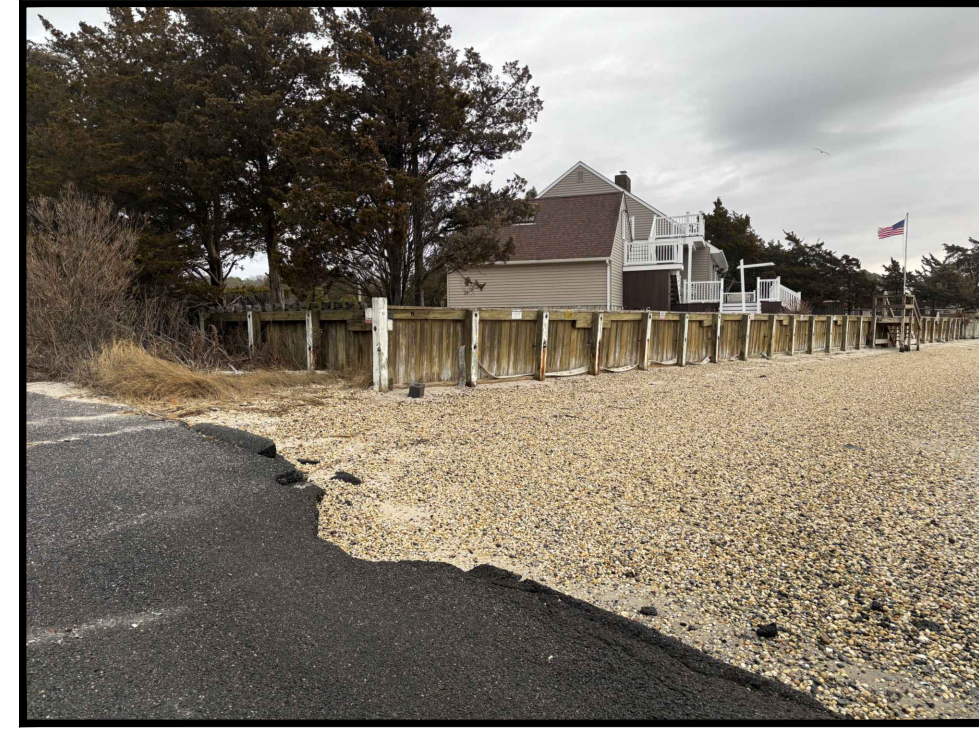


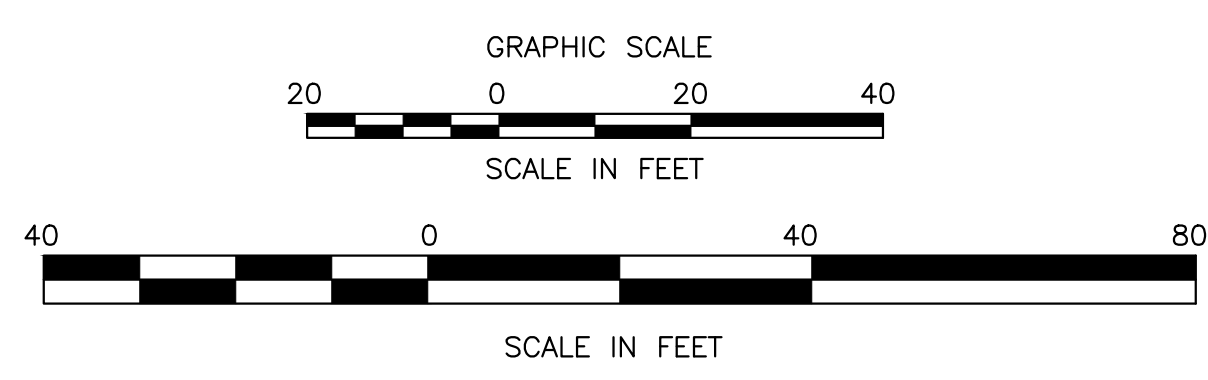
PHOTO NO. 7



PHOTO NO. 8

**PLAN**

SCALE 1"=20' (22"x34")  
SCALE 1"=40' (11"x17")



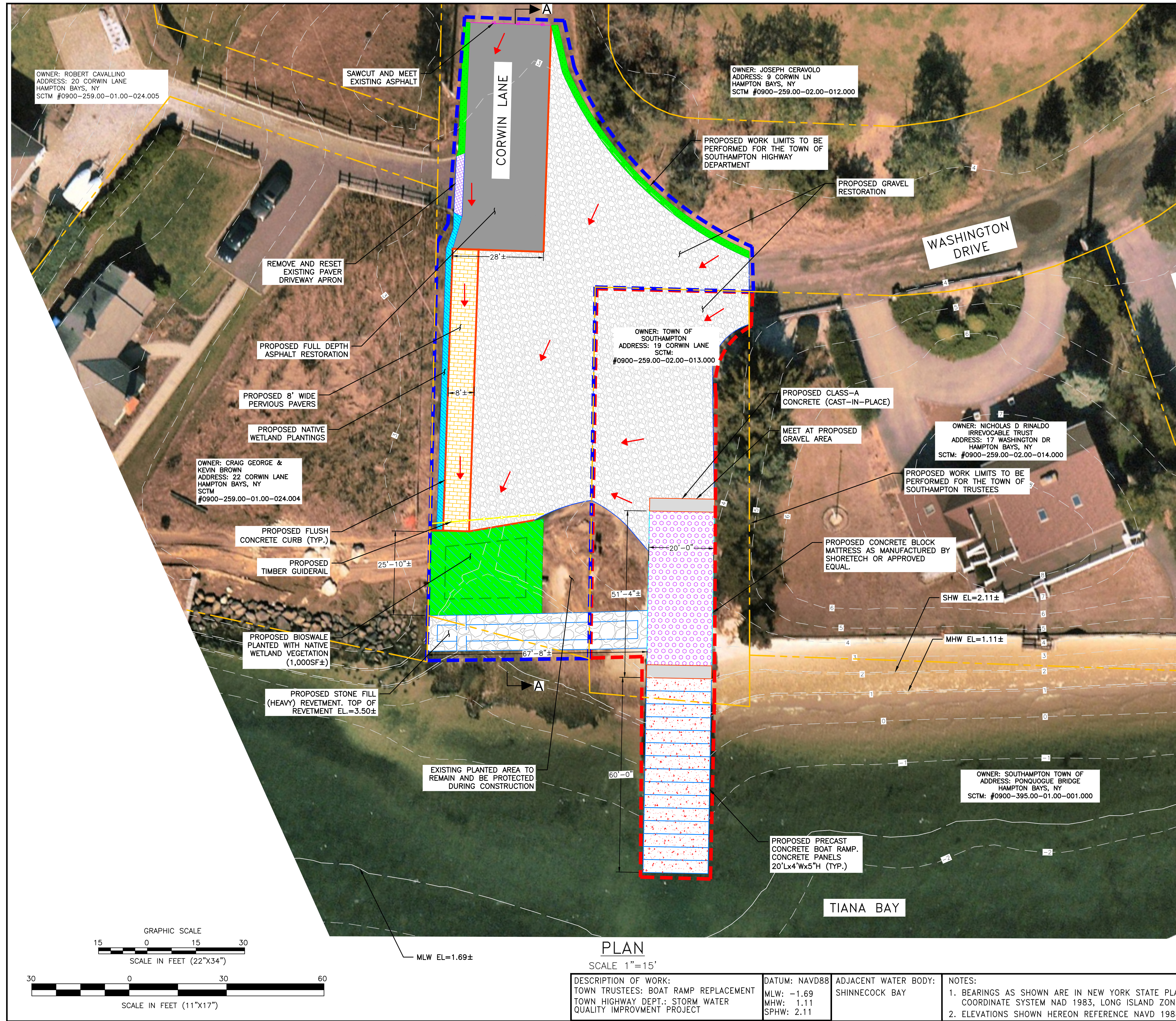
**LEGEND**

DESCRIPTION	SYMBOL
PHOTOGRAPH LOCATION WITH DIRECTION TAKEN AND PHOTO ID #	
APPROXIMATE SUFFOLK COUNTY TAX MAP LINES	
SUFFOLK COUNTY TAX MAP # (DISTRICT-SECTION-BLOCK-LOT)	SCTM# 100-183-01-85

DESCRIPTION OF WORK: TOWN TRUSTEES: BOAT RAMP REPLACEMENT TOWN HIGHWAY DEPT.: STORM WATER QUALITY IMPROVEMENT PROJECT	DATUM: NAVD88 MLW: -1.69 MHW: 1.11 SPHW: 2.11	ADJACENT WATER BODY: SHINNECOCK BAY	NOTES: 1. BEARINGS AS SHOWN ARE IN NEW YORK STATE PLANE COORDINATE SYSTEM NAD 1983, LONG ISLAND ZONE. 2. ELEVATIONS SHOWN HEREON REFERENCE NAVD 1988.
---	--	--	---

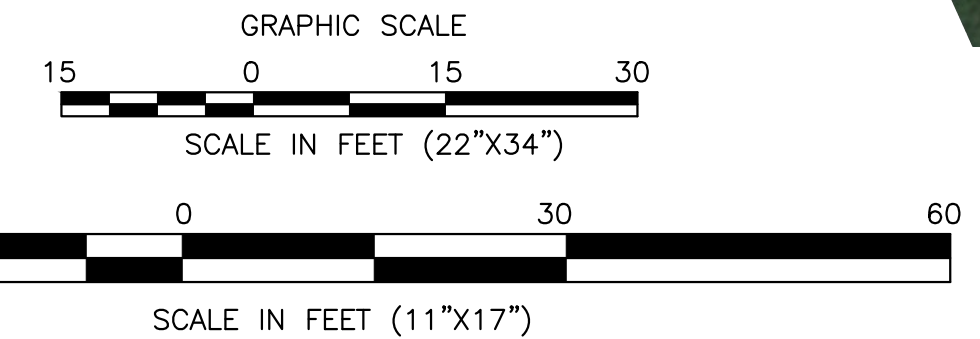
DATE	BY	DESCRIPTION	APPROV. BY
REVISIONS			
<b>LKMA</b>			
TOWN OF SOUTHAMPTON SUFFOLK COUNTY, NEW YORK CORWIN LANE ROADWAY WATER QUALITY IMPROVEMENTS PROJECT			
EXISTING CONDITIONS PLAN			
<b>L. K. McLEAN ASSOCIATES, D.P.C.</b> ENGINEERS & SURVEYORS 437 SOUTH COUNTRY RD., BROOKHAVEN, NY 11719			
Designed By: KJM	Scale: AS SHOWN	Sheet No.	
Drawn By: RAC	Date: MAR. 2025	<b>1 OF 1</b>	
Approved By: RAS	File No. 25037.000		

Mar 07, 2025 - 03:50pm  
 C:\Users\RCusack\AppData\Local\Temp\AcPublish\_15216\General\_Plan.dwg



**NOTES:**  
 1. EXISTING CONTOURS SHOWN ARE APPROXIMATE AND GATHERED FROM NOAA LIDAR.

- LEGEND**
- 1 --- APPROXIMATE EXISTING CONTOUR ELEVATIONS
  - - - - - APPROXIMATE SUFFOLK COUNTY TAX MAP LINES
  - ○ --- PROPOSED TIMBER GUIDERAIL
  - - - - - PROPOSED WORK LIMITS TO BE PERFORMED FOR THE TOWN OF SOUTHAMPTON HIGHWAY DEPARTMENT
  - - - - - PROPOSED WORK LIMITS TO BE PERFORMED FOR THE TOWN OF SOUTHAMPTON TRUSTEES
  - ■ --- PROPOSED SAWCUT
  - PROPOSED SHOREBLOCK MATTRESS
  - PROPOSED PRECAST CONCRETE BOAT RAMP
  - PROPOSED STONE FILLING (HEAVY)
  - PROPOSED GRAVEL
  - PROPOSED STONE FILLING (HEAVY)
  - PROPOSED BIOSWALE PLANTED WITH NATIVE WETLAND VEGETATION
  - PROPOSED NATIVE WETLAND PLANTINGS
  - PROPOSED PERVIOUS PAVERS
  - FLOW ARROW
  - PROPOSED CLASS-A CONCRETE (CAST-IN-PLACE)
  - PROPOSED FULL DEPTH ASPHALT RESTORATION



**PLAN**

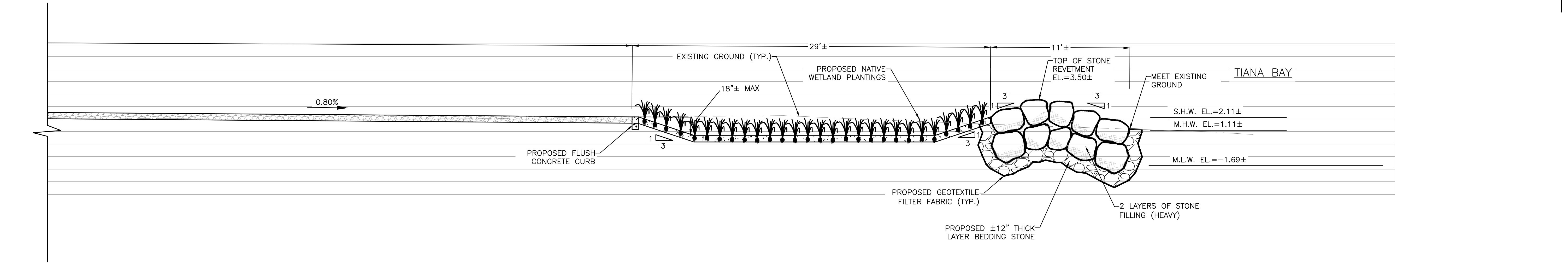
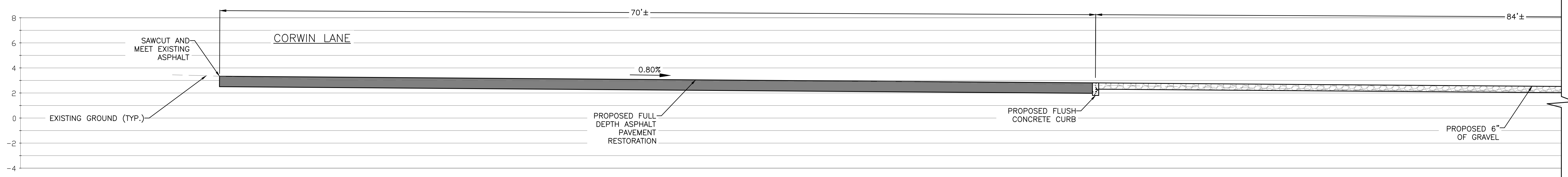
SCALE 1"=15'  
 DESCRIPTION OF WORK:  
 TOWN TRUSTEES: BOAT RAMP REPLACEMENT  
 TOWN HIGHWAY DEPT.: STORM WATER QUALITY IMPROVEMENT PROJECT

DATUM: NAVD88  
 MLW: -1.69  
 MHW: 1.11  
 SPHW: 2.11

ADJACENT WATER BODY:  
 SHINNECOCK BAY

NOTES:  
 1. BEARINGS AS SHOWN ARE IN NEW YORK STATE PLANE COORDINATE SYSTEM NAD 1983, LONG ISLAND ZONE.  
 2. ELEVATIONS SHOWN HEREON REFERENCE NAVD 1988.

DATE	BY	DESCRIPTION	APPROV. BY
REVISIONS			
<b>TOWN OF SOUTHAMPTON</b> SUFFOLK COUNTY, NEW YORK CORWIN LANE ROADWAY WATER QUALITY IMPROVEMENTS PROJECT			
GENERAL PLAN			
<b>L. K. McLEAN ASSOCIATES, D.P.C.</b> ENGINEERS & SURVEYORS 437 SOUTH COUNTRY RD., BROOKHAVEN, NY 11719			
Designed By:	KJM	Scale: AS SHOWN	Sheet No.
Drawn By:	RAC	Date: MAR. 2025	<b>1 OF 1</b>
Approved By:	RAS	File No. 25037.000	



SECTION A-A  
 SCALE 1"=4' (22"X34")  
 SCALE 1"=8' (11"X17")

Mar 07, 2025 - 03:54pm  
 C:\Users\RCusack\AppData\Local\Temp\AcPublish\_15216\General\_Plan.dwg

DESCRIPTION OF WORK: TOWN TRUSTEES: BOAT RAMP REPLACEMENT TOWN HIGHWAY DEPT.: STORM WATER QUALITY IMPROVEMENT PROJECT	DATUM: NAVD88 MLW: -1.69 MHW: 1.11 SPHW: 2.11	ADJACENT WATER BODY: SHINNECOCK BAY	NOTES: 1. BEARINGS AS SHOWN ARE IN NEW YORK STATE PLANE COORDINATE SYSTEM NAD 1983, LONG ISLAND ZONE. 2. ELEVATIONS SHOWN HEREON REFERENCE NAVD 1988.
--	--	--	--

DATE	BY	DESCRIPTION	APPROV. BY
REVISIONS			
<b>TOWN OF SOUTHAMPTON</b> SUFFOLK COUNTY, NEW YORK CORWIN LANE ROADWAY WATER QUALITY IMPROVEMENTS PROJECT			
TYPICAL SECTIONS			
<b>L. K. McLEAN ASSOCIATES, D.P.C.</b> ENGINEERS & SURVEYORS 437 SOUTH COUNTRY RD., BROOKHAVEN, NY 11719			
Designed By:	KJM	Scale:	AS SHOWN
Drawn By:	RAC	Date:	MAR. 2025
Approved By:	RAS	File No.	25037.000
			Sheet No. <b>1 OF 1</b>