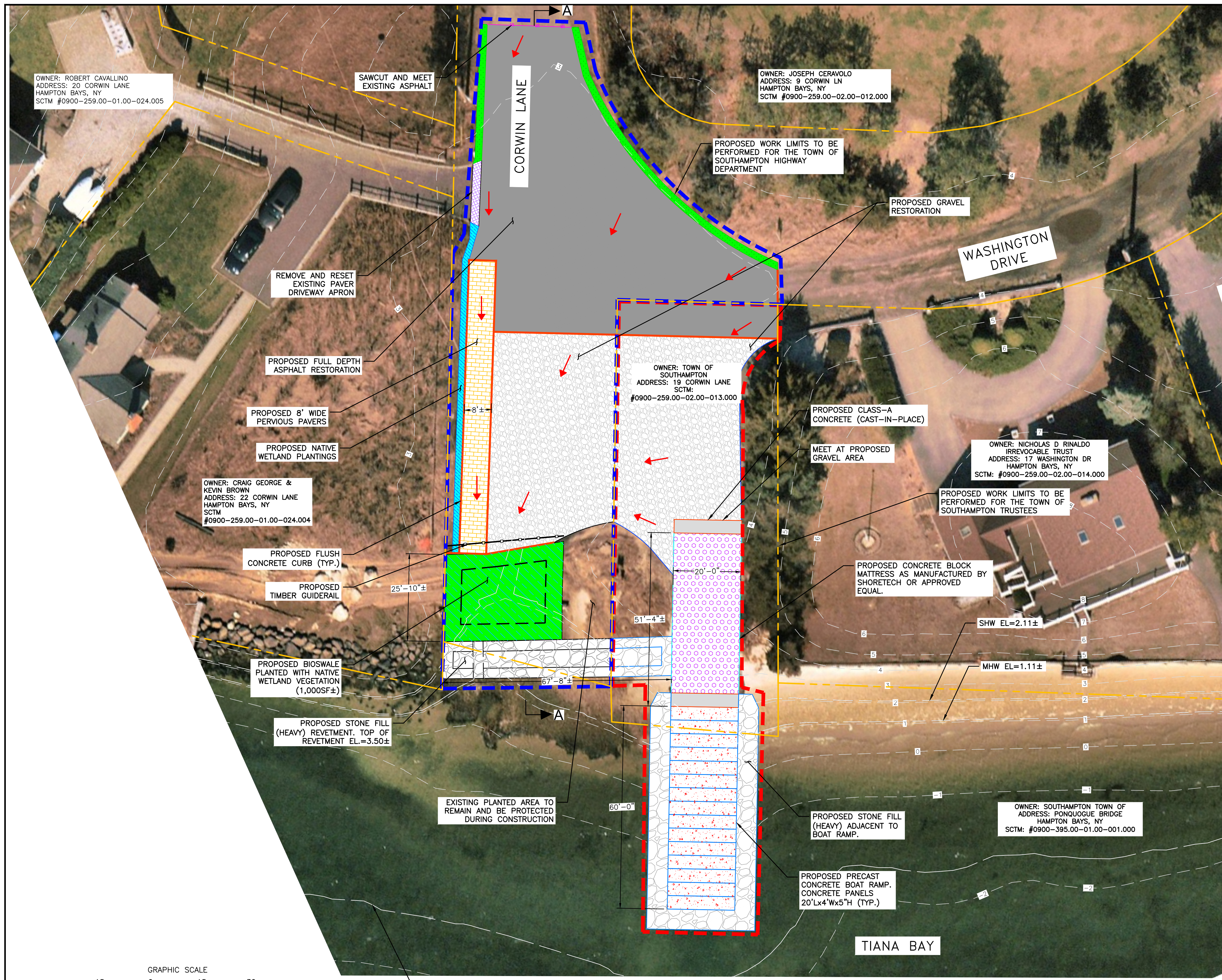
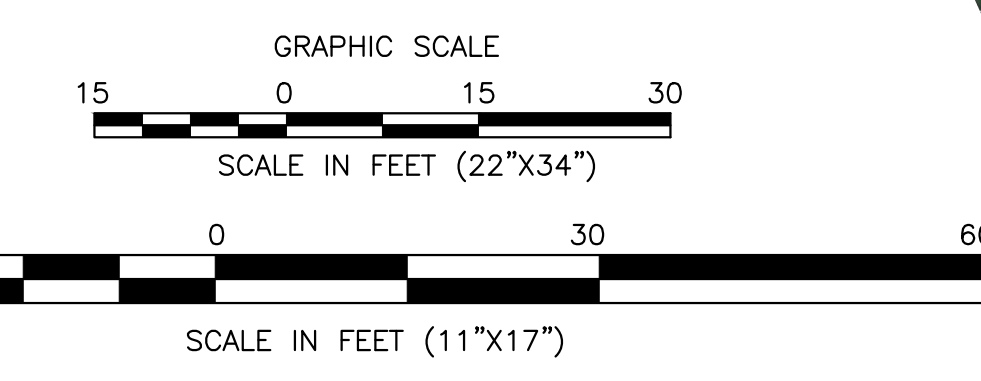


Mar 14, 2025 - 12:27pm
 P:\25037.000 TOSH Trustees Corwin Ramp\Civil DWG\Contract Drawings\General Plan.dwg



NOTES:
 1. EXISTING CONTOURS SHOWN ARE APPROXIMATE AND GATHERED FROM NOAA LIDAR.

- LEGEND**
- 1 --- APPROXIMATE EXISTING CONTOUR ELEVATIONS
 - - - - - APPROXIMATE SUFFOLK COUNTY TAX MAP LINES
 - ○ --- PROPOSED TIMBER GUIDERAIL
 - - - - - PROPOSED WORK LIMITS TO BE PERFORMED FOR THE TOWN OF SOUTHAMPTON HIGHWAY DEPARTMENT
 - - - - - PROPOSED WORK LIMITS TO BE PERFORMED FOR THE TOWN OF SOUTHAMPTON TRUSTEES
 - ○ --- PROPOSED SAWCUT
 - [Pattern] PROPOSED SHOREBLOCK MATTRESS
 - [Pattern] PROPOSED PRECAST CONCRETE BOAT RAMP
 - [Pattern] PROPOSED STONE FILLING (HEAVY)
 - [Pattern] PROPOSED GRAVEL
 - [Pattern] PROPOSED STONE FILLING (HEAVY)
 - [Pattern] PROPOSED BIOSWALE PLANTED WITH NATIVE WETLAND VEGETATION
 - [Pattern] PROPOSED NATIVE WETLAND PLANTINGS
 - [Pattern] PROPOSED PERVIOUS PAVERS
 - FLOW ARROW
 - [Pattern] PROPOSED CLASS-A CONCRETE (CAST-IN-PLACE)
 - [Pattern] PROPOSED FULL DEPTH ASPHALT RESTORATION



PLAN
 SCALE 1"=15'

DESCRIPTION OF WORK:
 TOWN TRUSTEES: BOAT RAMP REPLACEMENT
 TOWN HIGHWAY DEPT.: STORM WATER QUALITY IMPROVEMENT PROJECT

DATUM: NAVD88
 MLW: -1.69
 MHW: 1.11
 SPHW: 2.11

ADJACENT WATER BODY:
 SHINNECOCK BAY

NOTES:
 1. BEARINGS AS SHOWN ARE IN NEW YORK STATE PLANE COORDINATE SYSTEM NAD 1983, LONG ISLAND ZONE.
 2. ELEVATIONS SHOWN HEREON REFERENCE NAVD 1988.

DATE	BY	DESCRIPTION	APPROV. BY
REVISIONS			
LKMA TOWN OF SOUTHAMPTON SUFFOLK COUNTY, NEW YORK CORWIN LANE ROADWAY WATER QUALITY IMPROVEMENTS PROJECT GENERAL PLAN L. K. McLEAN ASSOCIATES, D.P.C. ENGINEERS & SURVEYORS 437 SOUTH COUNTRY RD., BROOKHAVEN, NY 11719			
Designed By:	KJM	Scale:	AS SHOWN
Drawn By:	RAC	Date:	MAR. 2025
Approved By:	RAS	File No.	25037.000
			Sheet No. 1 OF 1