



NOTES:  
1. HORIZONTAL DATUM IS REFERENCED TO NAD83 AND VERTICAL DATUM IS REFERENCED TO NAVD88.

BOTTOM OF INFILTRATION BASIN  
(EL. 1.1±) (1,200 SF±)

PROPOSED STONE OVERFLOW  
WEIR AREA (EL. 2.3±)

LEGEND

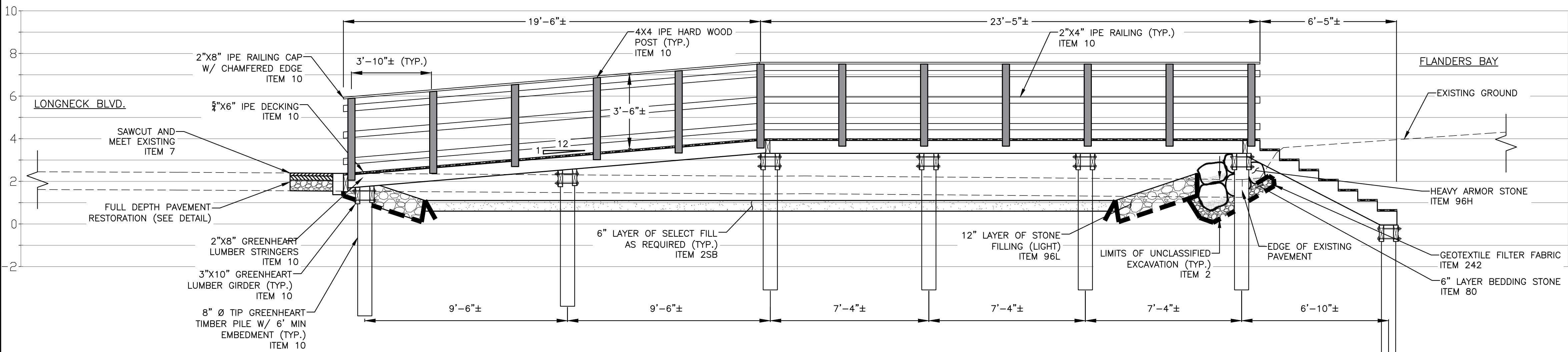
- PROPOSED STONE FILLING (LIGHT)
- PROPOSED HEAVY ARMOR STNOE
- PROPOSED NATIVE BEACH PLANTINGS
- PROPOSED PROPOSED STEEL BACKED  
TIMBER GUIDERAIL
- PROPOSED TIMBER BOARDWALK
- APPROXIMATE SUFFOLK  
COUNTY TAX MAP LINES
- PROPOSED LIMITS OF CLEARING AND  
GROUND DISTURBANCE

REMOVE AND RESET  
EXISTING SIGNS (TYP.)

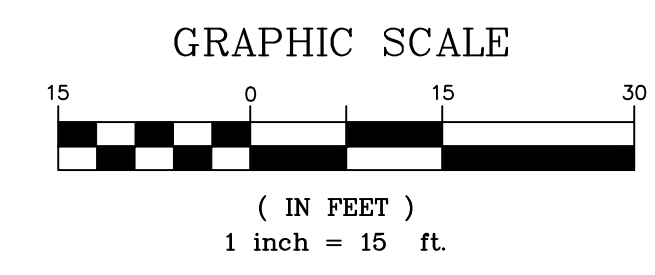
MEET TOP OF EXISTING BERM  
(EL. 3.5± & VARIES)

PROPOSED NATIVE BEACH GRASS  
PLANTINGS (TYP.)  
ITEM 124

SITE PLAN  
SCALE: 1"=15'



SECTION A-A  
SCALE 1"=3' (22"x34")  
SCALE 1"=6' (11"x17")  
SCALE 1"=9' (8.5"x11")



DATE	BY	DESCRIPTION	APPROV. BY
REVISIONS			
TOWN OF SOUTHAMPTON SUFFOLK COUNTY, NY			
LONGNECK BOULEVARD			
GENERAL PLAN			
<b>L. K. McLEAN ASSOCIATES, P.C.</b> CONSULTING ENGINEERS 437 SOUTH COUNTRY RD., BROOKHAVEN, NEW YORK 11719			
Designed By:	KJM	Scale: AS NOTED	Sheet No.
Drawn By:	RAC	Date: DEC. 2024	1 of 1
Approved By:	RGD	File No. 22019.000	

Dec 06, 2024 - 02:58pm  
C:\Users\Rcusock\AppData\Local\Temp\AcPublish\_16868\Longneck Blvd - Conceptual Plan.dwg

THE EDUCATION LAW OF THE STATE OF NEW YORK PROHIBITS ANY PERSON FROM ALTERING ANYTHING ON THE DRAWINGS AND/OR THE ACCOMPANYING SPECIFICATIONS, UNLESS IT'S UNDER THE DIRECTION OF A LICENSED PROFESSIONAL ENGINEER. WHERE SUCH ALTERATIONS ARE MADE, THE PROFESSIONAL ENGINEER MUST SIGN, SEAL, DATE AND DESCRIBE THE FULL EXTENT OF THE ALTERATION ON THE DRAWING AND/OR IN THE SPECIFICATION (NYS ED. LAW SECTION 2209-2).