





**EMMA ELLISTON MEMORIAL PARK  
CAPITAL IMPROVEMENTS**

DATE: AUG. 12, 2021

DRAWN BY: DLB

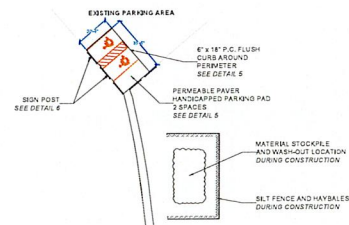
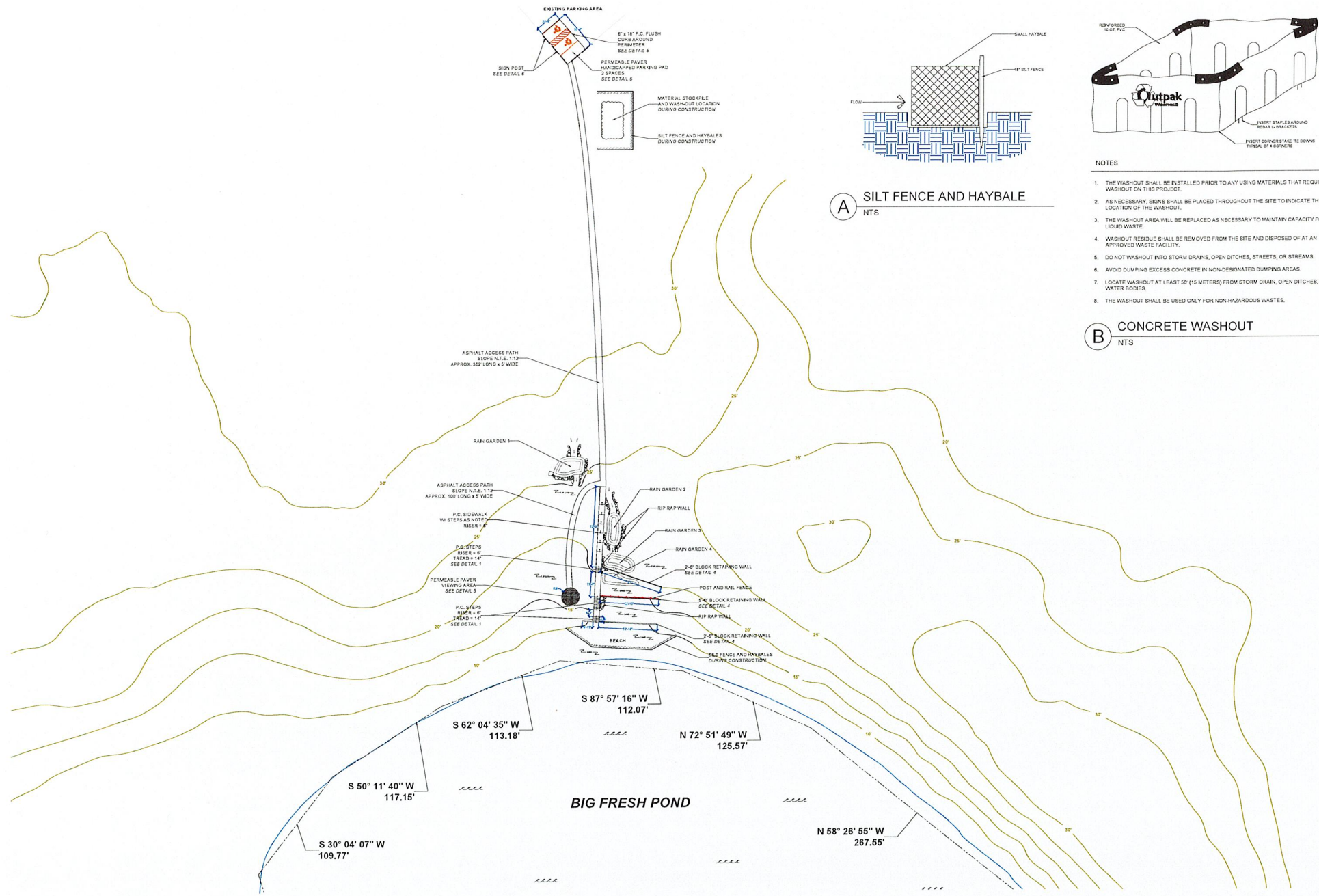
SCALE: 1" = 40'-0"

REVISIONS:

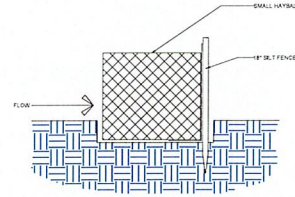
SHEET NO.

**2**

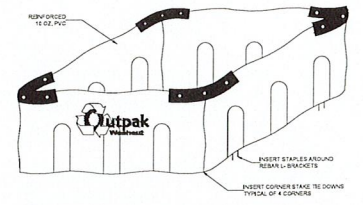
**SITE PLAN**



**A SILT FENCE AND HAYBALE**  
NTS



**B CONCRETE WASHOUT**  
NTS



- NOTES**
1. THE WASH-OUT SHALL BE INSTALLED PRIOR TO ANY USING MATERIALS THAT REQUIRE WASH-OUT ON THIS PROJECT.
  2. AS NECESSARY, SIGNS SHALL BE PLACED THROUGHOUT THE SITE TO INDICATE THE LOCATION OF THE WASH-OUT.
  3. THE WASH-OUT AREA WILL BE REPLACED AS NECESSARY TO MAINTAIN CAPACITY FOR LIQUID WASTE.
  4. WASH-OUT RESIDUE SHALL BE REMOVED FROM THE SITE AND DISPOSED OF AT AN APPROVED WASTE FACILITY.
  5. DO NOT WASH-OUT INTO STORM DRAINS, OPEN DITCHES, STREETS, OR STREAMS.
  6. AVOID DUMPING EXCESS CONCRETE IN NON-DESIGNATED DUMPING AREAS.
  7. LOCATE WASH-OUT AT LEAST 50 (15 METERS) FROM STORM DRAIN, OPEN DITCHES, OR WATER BODIES.
  8. THE WASH-OUT SHALL BE USED ONLY FOR NON-HAZARDOUS WASTES.

S 87° 57' 16" W 112.07'  
 S 62° 04' 35" W 113.18'  
 S 50° 11' 40" W 117.15'  
 S 30° 04' 07" W 109.77'  
 N 72° 51' 49" W 125.57'  
 N 58° 26' 55" W 267.55'



EMMA ELLISTON MEMORIAL PARK  
CAPITAL IMPROVEMENTS

DATE: AUG. 12, 2021

DRAWN BY: DLB

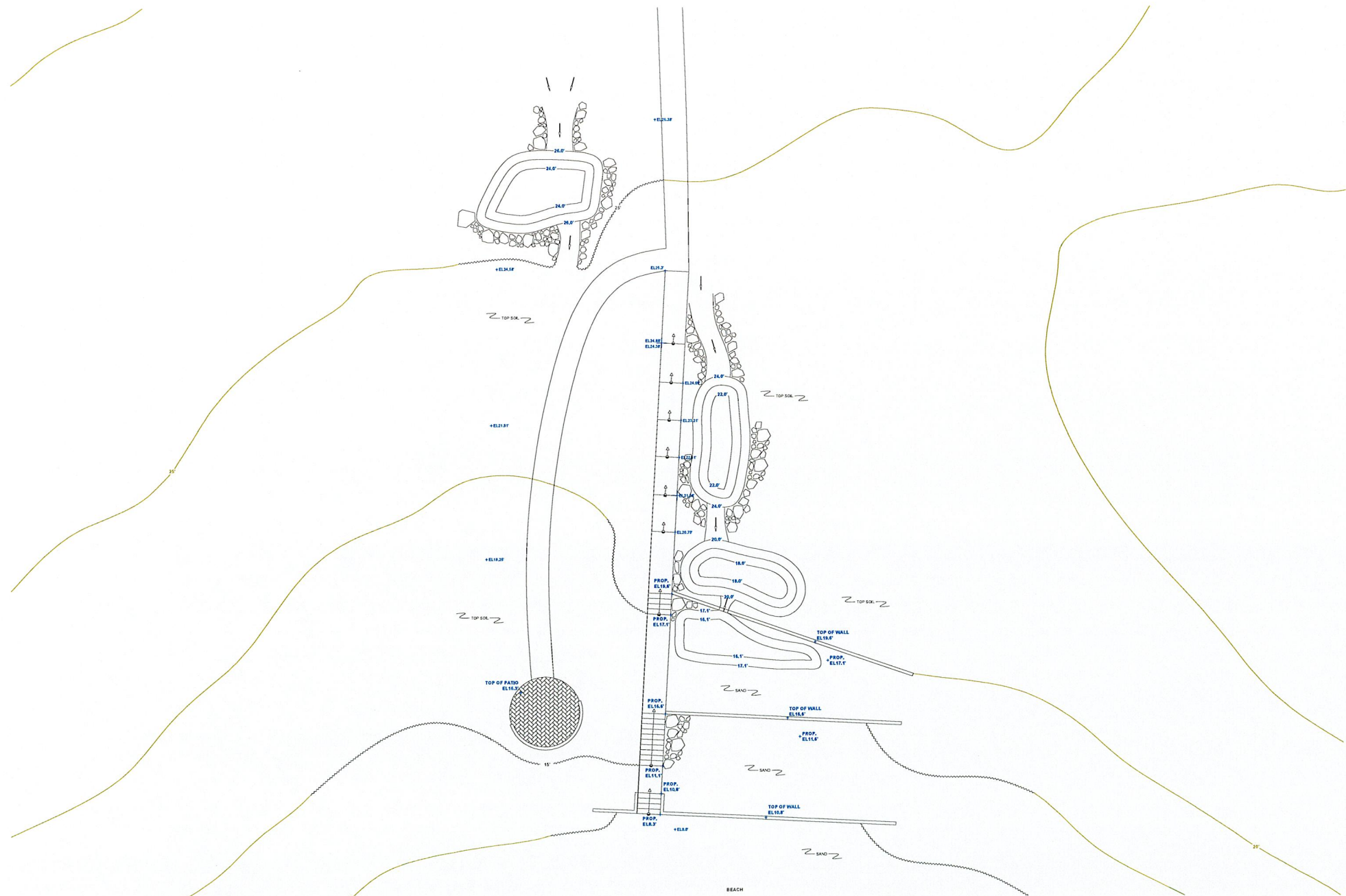
SCALE: 1" = 10'-0"

REVISIONS:

SHEET NO.

3

**GRADING PLAN**





**EMMA ELLISTON MEMORIAL PARK  
CAPITAL IMPROVEMENTS**

DATE: AUG. 12, 2021

DRAWN BY: DLB

SCALE: 1" = 10'-0"

REVISIONS:

SHEET NO.

**4**

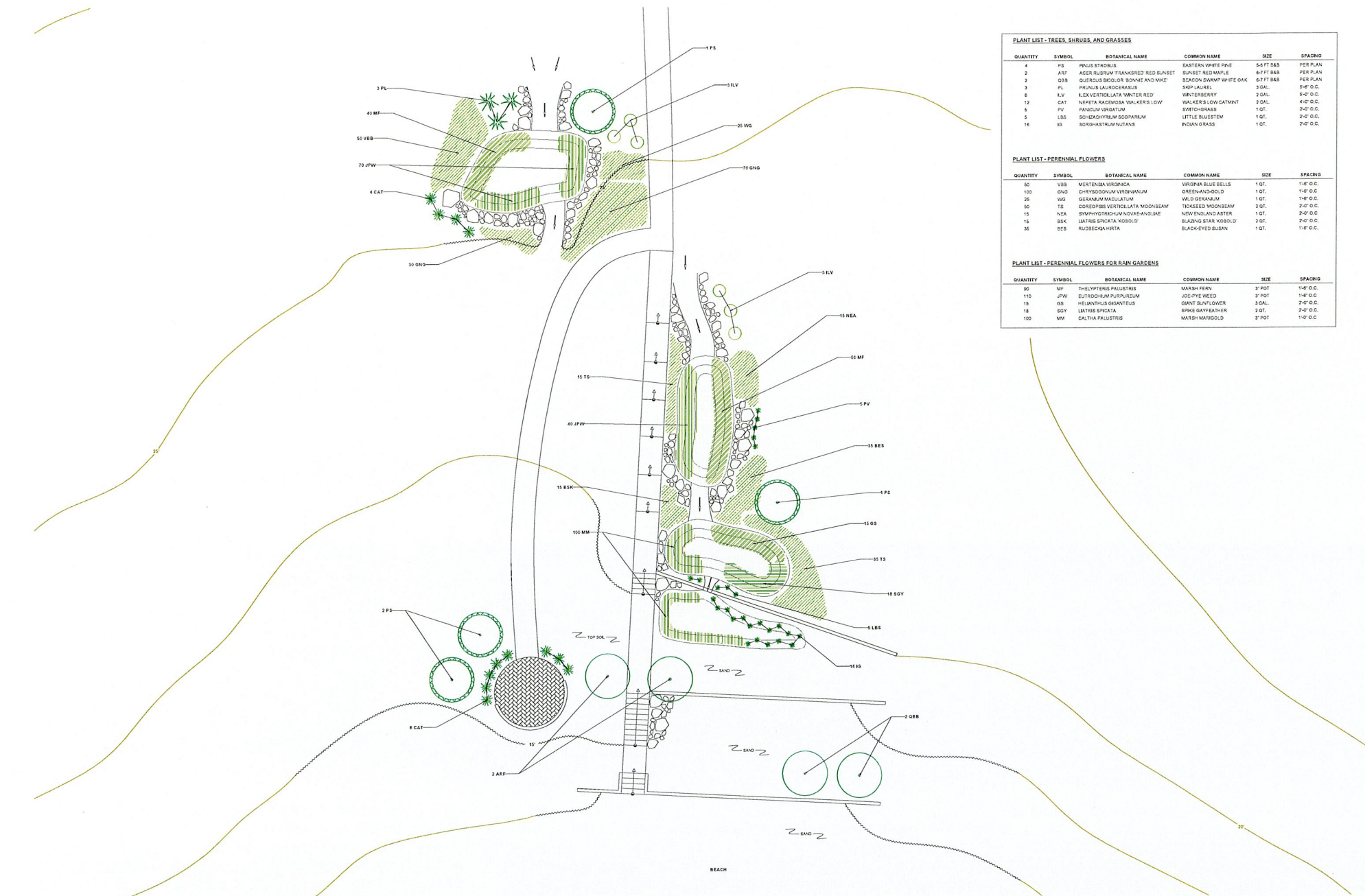
PLANT LIST - TREES, SHRUBS, AND GRASSES					
QUANTITY	SYMBOL	BOTANICAL NAME	COMMON NAME	SIZE	SPACING
4	TS	PNUS STROBUS	EASTERN WHITE PINE	6-8 FT BAB	PER PLAN
2	ARF	ACER RUBRUM FRANKERED RED SUNSET	SUNSET RED MAPLE	6-7 FT BAB	PER PLAN
2	QBB	QUERCUS BICOLO, OR BONNIE AND MIKE	BEACON SWAMP WHITE OAK	6-7 FT BAB	PER PLAN
3	PL	PRUNUS LAUROCECLUS	SPY PLUMER	3 GAL.	5'-0" O.C.
6	LV	LEX VERTICILLATA WINTER RED	WINTER BERRY	2 GAL.	5'-0" O.C.
12	CAT	NEPETA RACEMOSA WALKER'S LOW	WALKER'S LOW CATMINT	2 GAL.	4'-0" O.C.
5	PV	PANDANUS VERTICILLATUS	SPYDOG GRASS	1 QT.	2'-0" O.C.
5	LBS	SOCHADRYUM SCOPARIUM	LITTLE BLUESTEM	1 QT.	2'-0" O.C.
16	KS	SORGHASTRUM NUTANS	INDIAN GRASS	1 QT.	2'-0" O.C.

PLANT LIST - PERENNIAL FLOWERS					
QUANTITY	SYMBOL	BOTANICAL NAME	COMMON NAME	SIZE	SPACING
30	VBS	VERTESSA VIRGINICA	VERONIA BLUE BELLS	1 QT.	1'-6" O.C.
100	GNB	CHRYSOIDUM VIRGINIANUM	GREEN AND GOLD	1 QT.	1'-6" O.C.
25	WG	GERANIUM MACGILLIVRAYI	WLD GERANIUM	1 QT.	1'-6" O.C.
30	TS	CONOPSEUS VERTICILLATA WOODSEAM	TRICKERS WOODSEAM	3 DEF.	2'-0" O.C.
15	NEA	BYRRHYOTRICHUM NOVAE-ANGLIAE	NEW ENGLAND ASTER	1 QT.	2'-0" O.C.
15	BSK	LATHRIS SPICATA KORBOLD	BLAZING STAR KORBOLD	2 QT.	2'-0" O.C.
35	BES	RUDBECKIA HERTA	BLACK EYED SUSAN	1 QT.	1'-6" O.C.

PLANT LIST - PERENNIAL FLOWERS FOR RAIN GARDENS					
QUANTITY	SYMBOL	BOTANICAL NAME	COMMON NAME	SIZE	SPACING
90	MF	THELYPTERIS PALUSTRIS	MARSH FERN	3" POT	1'-6" O.C.
110	PM	EUTROCHUM PURPUREUM	JOB-PHYE WEEB	3" POT	1'-6" O.C.
15	GS	HELIANTHUS GIGANTEUS	GIANT SUNFLOWER	3 GAL.	2'-0" O.C.
18	SDY	LATHRIS SPICATA	SPRKE GAFFEAHER	2 QT.	2'-0" O.C.
100	MM	CALTHA PALUSTRIS	MARSH MARIGOLD	3" POT	1'-0" O.C.



**LANDSCAPE PLAN**