

PROJECT APPLICANT: Whispering Fields Homeowners Association, Inc.

PROJECT TITLE: Whispering Fields Court Farm Runoff Remediation

PROJECT TYPE: Non-Point Source Abatement/Pollution Prevention

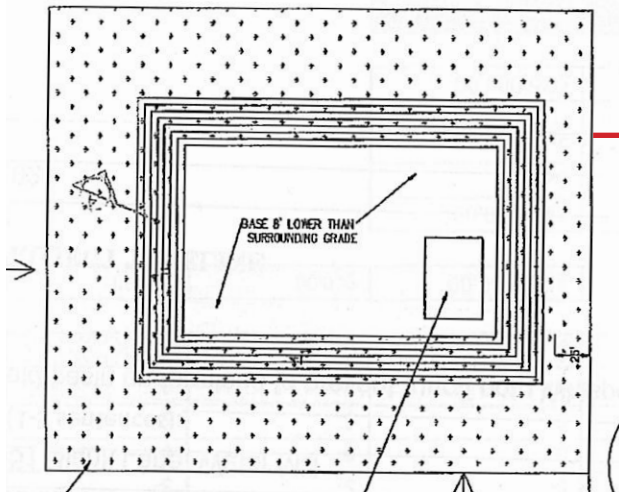
SCALE: Neighborhood/Watershed

APPROACH: Remediation

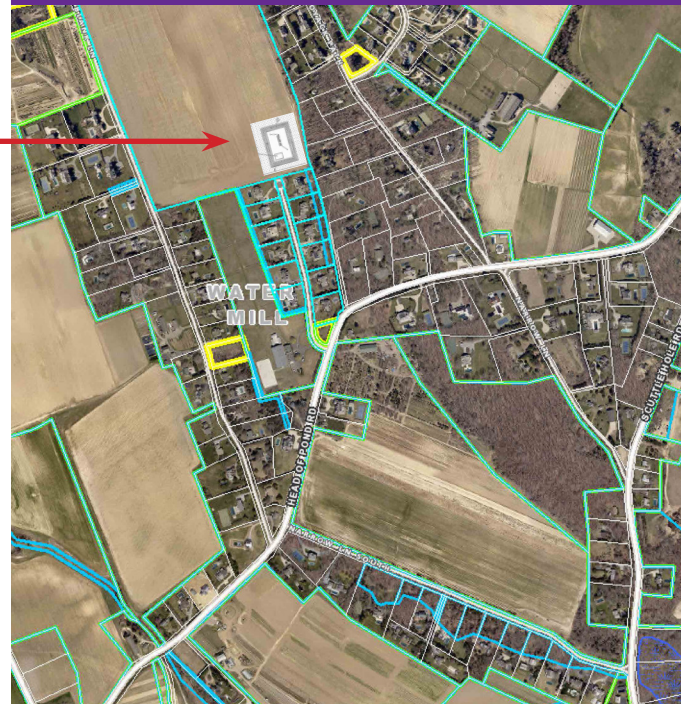
DESCRIPTION:

The proposed project is for funding construction of a stormwater retention basin on the southeast corner of the farm located at 351 Blank Lane designed to catch stormwater runoff that presently overflows from the farm. The installation of the basin alleviate excessive flooding from the existing farm’s stormwater runoff. The runoff and overflow from the farm contains silt, fertilizer and most likely other chemicals. There is concern that the overflow and runoff may contaminate drinking water wells on WFC and ultimately have a negative impact on the water quality of Mecox Bay. Although the farm and WFC are not in high priority areas, the roads to the south are in an “area of concern” according to Southampton Town’s report on farmland runoff.

PROPOSED PROJECT



MAP OF PROJECT LOCATION



REQUESTED AMOUNT: \$ 75,000