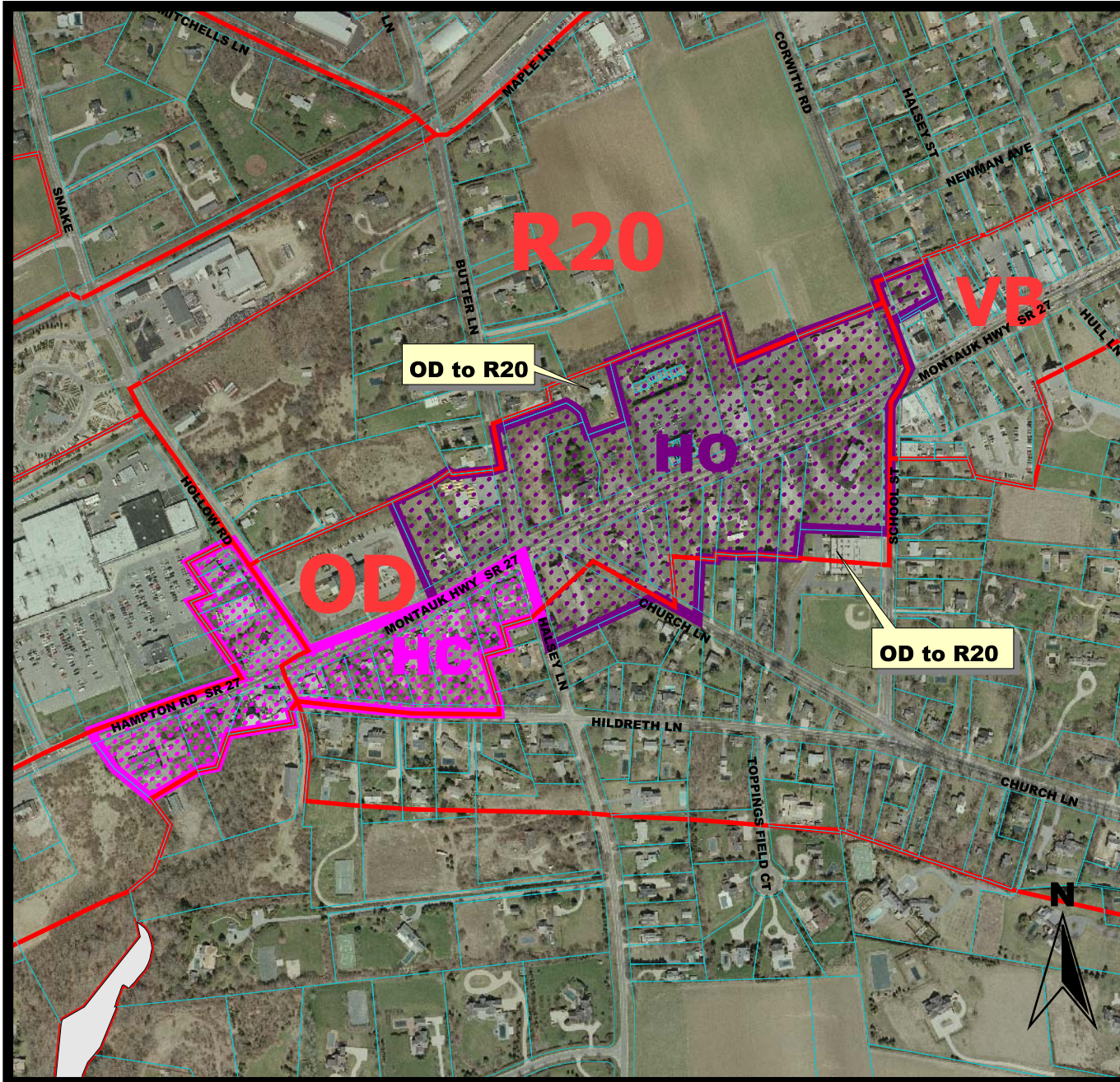


# Proposed Hamlet Office (HO) and Hamlet Commercial (HC) Zoning Districts



## Bridgehampton

-  Tax Parcels
-  Existing Zoning

### Proposed Zoning Districts

-  HC-Hamlet Commercial
-  HO-Hamlet Office



**Town of Southampton**  
**DLM - Planning Division**  
**Division of Information Systems**  
**Geographic Information System**

**Date:**  
**July 21, 2004**  
**Revised:**  
**July 25, 2005**

**Prepared by:**  
**Kyle P. Collins, AICP**

Suffolk County Real Property Tax Service  
 COPYRIGHT 1997, COUNTY OF SUFFOLK, N.Y.  
 Real Property Tax Map parcel linework used with permission  
 of Suffolk County Real Property Tax Service Agency (R.P.T.S.A.)  
 This Cartographic rendering is a DRAFT MAP exempted from  
 the provisions of the Freedom of Information Law (F.O.I.L.)  
 (Public Officers Law Article 6 Section 84-90) by section 87.2.g  
 in that:

1. The data displayed is an interagency or intra agency draft produced for the purpose of identifying and correcting data.
2. It is not a final agency determination.
3. It is not a statistical or factual compilation of data.
4. In some cases correct data has been left out and questionable or inaccurate data has been exaggerated to help identify errors. In short this is a DRAFT MAP produced in cooperation with the Data sources listed in an effort to aid in the correction of data and is not held out as being complete or accurate in any way.