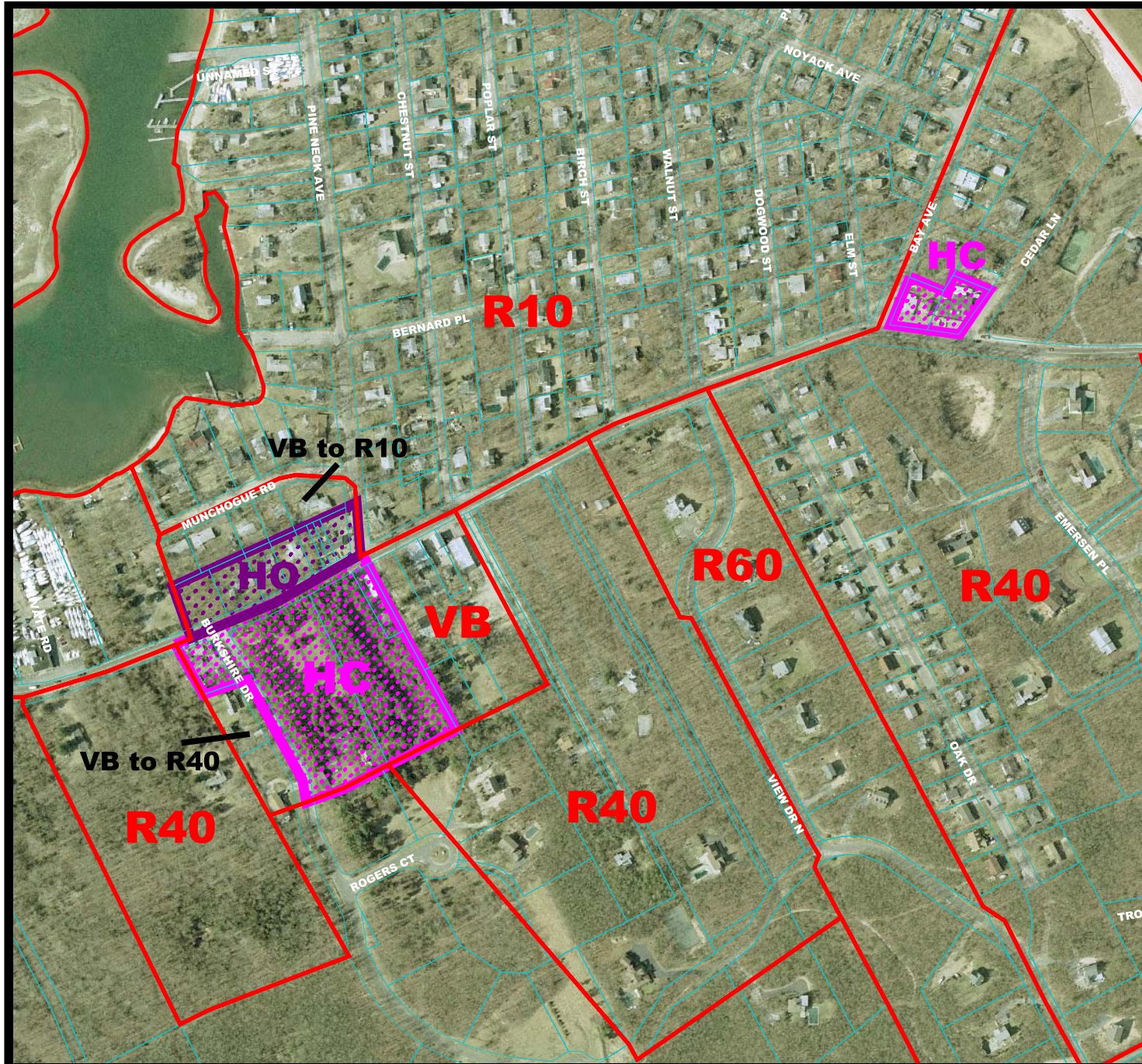


Proposed Hamlet Office (HO) and Hamlet Commercial (HC) Zoning Districts



NOYACK

Existing Zoning

Tax Parcels

Proposed Zoning Districts

HC - Hamlet Commercial

HO - Hamlet Office

400 0 400 Feet



Town of Southampton
DLM - Planning Division
Division of Information Systems
Geographic Information Systems

Date: July 8, 2004

Last Revised:

March 2, 2005

Prepared by:

Kyle P. Collins, AICP

Suffolk County Real Property Tax Service
 COPYRIGHT 1997 COUNTY OF SUFFOLK, N.Y.
 Real Property Taxmap parcel linework used with permission of
 Suffolk County Real Property Tax Service Agency (R.P.T.S.A.)
 This Cartographic rendering is a DRAFT MAP extracted from
 the provisions of the Freedom of Information Law, § 21(1),
 (Public Officers Law Article 6 Section 84-80) by section 87(2)(g)
 in that:

1. The data displayed is an interagency or intra agency draft produced for the purpose of identifying and correcting data.
2. It is not a final agency determination.
3. It is not a statistical or factual compilation of data.
4. In some cases correct data has been left out and questionable or inaccurate data has been reorganized to help identify errors. In short this is a DRAFT MAP produced in cooperation with the Data sources listed in an effort to aid in the correction of data and is not held out as being complete or accurate in any way.