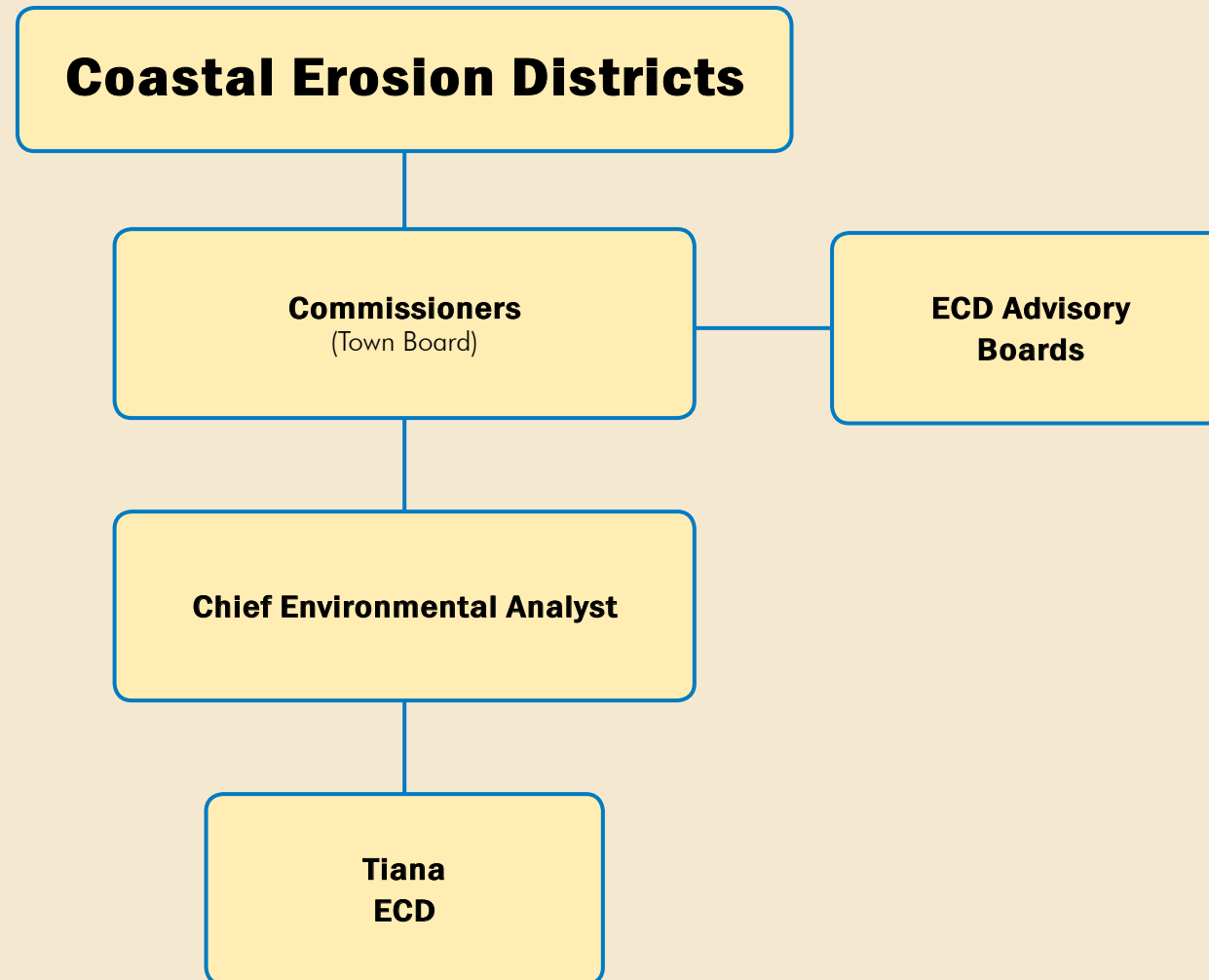


EROSION CONTROL DISTRICTS

2011 ORGANIZATIONAL CHART



Department Summary

Department: Erosion Control District

Budget Year: 2011

Division: Erosion District

Tax District: Unassigned

Cost Center #: 0007

Manager:

NOTES:

Departmental Mission & Responsibilities:

An Erosion Control District (ECD) was established for the Tiana area in 2005 as a means of providing funding to assist with recovery costs related to coastal erosion and storm events. Erosion poses a perpetual threat to private and public property, necessitating costly emergency beach nourishment and capital improvements. The Town Comptroller acts as the Fiduciary for the Tiana Erosion Control District. The Town Board acts as the Commission for the Tiana ECD. The Tiana ECD Advisory Committee has been established to assist the Town Comptroller and Town Board with administrative oversight of finances involved. The Chief Environmental Analyst of the Department of Land Management shall serve as Coastal Erosion Project Administrator.

Workload:

Goals & Objectives:

Legal Authority:

Erosion Control Districts are established by the Town Board pursuant to Town Law Article 12.



2011 ADOPTED BUDGET

Coastal Erosion

Tiana

Final 2010 Assessment Roll

Total Assessed Value
..... \$220,039,172

Total Exempt Value
..... \$58,294,375

Total Taxable Value
..... \$161,744,797

Symbols

Coastal Erosion District



TOWN OF SOUTHAMPTON
116 Hampton Rd, Southampton NY 11968
www.southamptontownny.gov



Prepared by:
Town of Southampton
Division of Geographic Information
Systems
12/13/2010

Suffolk County Real Property Tax Service
COPYRIGHT 2010, COUNTY OF SUFFOLK, N.Y.
Real Property Taxmap parcel linework used with permission of
Suffolk County Real Property Tax Service Agency (R.P.T.S.A.)

This Cartographic rendering is a DRAFT MAP excepted from
the provisions of the Freedom of Information Law (F.O.I.L.)
[Public Officers Law Article 6 Section 84-90] by section 87.2.g
in that:

- 1.The data displayed is an interagency or intra agency draft produced for the purpose of identifying and correcting data.
- 2.It is not a final agency determination.
- 3.It is not a statistical or factual compilation of data.
4. In some cases correct data has been left out and questionable or inaccurate data has been exaggerated to help identify errors. In short this is a DRAFT MAP produced in cooperation with the Data sources listed in an effort to aid in the correction of data and is not held out as being complete or accurate in any way.

